

Step Light Box

SLB81*

MATERIAL / FIXTURES

- High temperature polymer corrosion resistant Recessed Box - Black
- Full reflector for maximum light reflection
- SLB8100BK – full size
- SLB8110BK half size
- Covers for both sold separately

ELECTRICAL

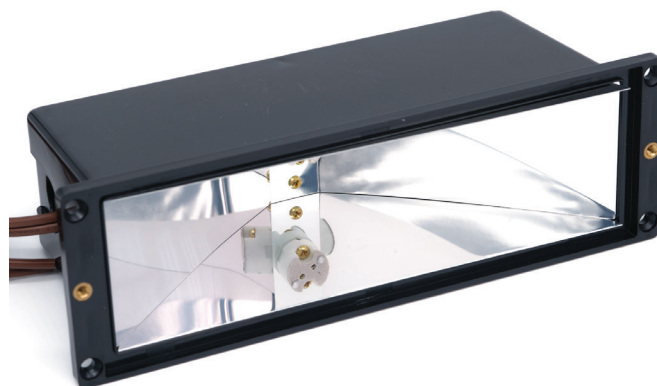
- 12 Volt Fixture
- 6' - #18/2 Direct Bury Landscape Lighting Wire
- Hi-temp ceramic socket w/nickel contacts, stainless steel springs, and Teflon jacketed wire leads
- Lamp required – G4 T3 Bi Pin (not included)
- Low Voltage Transformer required (not included)
- Wire Connectors required (not included)
- C ETL listed and approved

DIMENSIONS

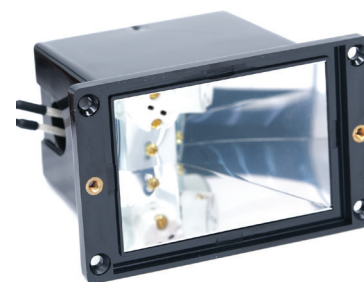
- SLB8100BK
 - Width of cover screw holes 8.25"
 - Width of recessed box 8.62"
 - Depth of recessed box 3.15"
 - Height of recessed box 2.75"
- SLB8110BK
 - Width of cover screw holes 4"
 - Width of recessed box 4.34"
 - Depth of recessed box 3.15"
 - Height of recessed box 2.75"

LED LAMP OPTIONS

- LV1-T3
- LV2-T3
- LV3-T3



SLB8100BK



SLB8110BK



LV1-T3



LV2-T3



LV3-T3

