

# Universal Well Covers

## MATERIAL / FIXTURES

- Heavy Duty Cast Aluminum Covers
  - UC1300BZ
  - UC1301BZ
- Heavy Duty Cast Brass Covers:
  - UC2300WB
  - UC2301WB
  - UC2302WB
  - UC2306WB
- Stainless Steel Screws
- Heat Resistant Glass Lens
- EPDM Rubber Gasket
- Resistant Powder Coat Finish – Aluminum
  - (BZ) Commercial Bronze
- Weather Resistant Aged Finish – Brass
  - WB Brass finish will patina / tarnish depending on environmental conditions



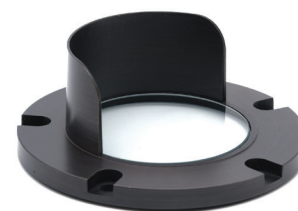
UC2300WB



UC2301WB



UC2302WB



UC2306WB

## ELECTRICAL

- 12 Volt Fixture
- 3' - #18/2 Direct Bury Landscape Lighting Wire
- Hi-temp ceramic socket w/nickel contacts, stainless steel springs, and Teflon jacketed wire leads
- Lamp required – MR16 50 W Max
- Low Voltage Transformer required (not included)
- Wire Connectors required (not included)
- C ETL listed and approved
- UW6300BK Well Light required (not included)



UC1300BZ



UC1301BZ

## DIMENSIONS

- UC Covers for UW6300BK Brass and Aluminium – 4.875 W x 1.875" H



BRASS



ALUMINUM

