

Path Light

UPL1319BZ-15LV2T3

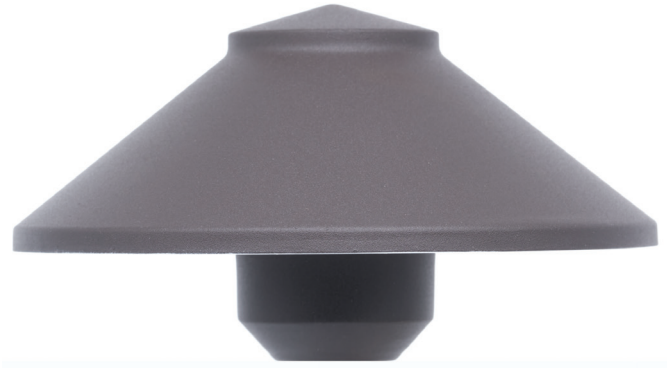
CPF: Complete Packaged Fixtures

Product Description

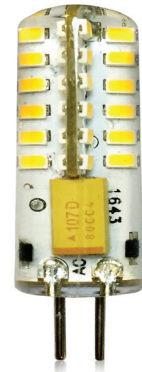
- The UPL1319BZ-15LV2T3 includes :
 - US1319BZ Cast Aluminum Bronze powder coated shade
 - UP1115BZ 15" Extruded Aluminum Bronze powder coated universal post
 - GS1 ground stake
 - LV2-T3 LED Lamp

LED LAMP INCLUDED

- LV2-T3-27K
- 9-15 V AC/DC
- T3 BI pin lamp
- IP67 Rated
- Silica gel filled
- 35 x 35 SMD Chipset
- 2700K
- 180 Lumens
- 5 Year Warranty
- C ETL Listed and approved
- FCC Certified



US1319BZ



UP1115BZ

LV2-T3-27K



UNIVERSAL[®]
LIGHTING SYSTEMS