

LED - LXC MR16

LXC2, LXC3, LXC5

SPECIFICATIONS

- Machined aluminum body
- Epoxy potted circuitry
- GU5.3 base socket
- 80+ CRI
- 40,000 hour rated
- Multiple beam spreads
- (NS) Narrow spot 15°
- (FL) Flood 40°
- (WFL) Wide flood 60°
- Stainless steel pins
- Made for use in enclosed fixtures and damp location
- 2200K, 2700K and 3000K
- LXC2-MR16
 - 250 Lumens, 3 Watts, .35 VA, .7 PF
- LXC3-MR16
 - 400 Lumens, 5 Watts, .55 VA, .7 PF
- LXC5-MR16
 - 550 Lumens, 7 Watts, .70 VA, .7 PF
- IP rating 54
- Lamp - 7 year warranty

ELECTRICAL

- 9-15 V AC/DC
- Constant current driver for long life
- Dimmable with Lutron magnetic dimmers
 - Dimming may reduce life span
- Enclosed fixture required (not included)
- Low voltage transformer or electronic transformer required (not included)
- C ETL listed and approved
- FCC certified

MODELS

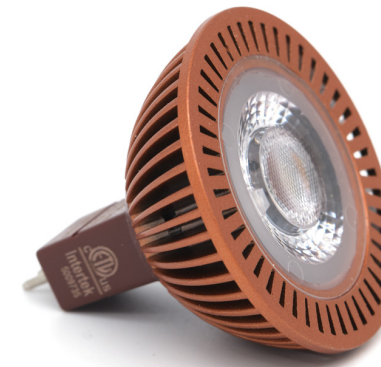
- LXC2-MR16-NS-22K, LXC2-MR16-NS-27K, or LXC2-MR16-NS-30K
- LXC2-MR16-FL-22K, LXC2-MR16-FL-27K, or LXC2-MR16-FL-30K
- LXC2-MR16-WF-27K or LXC2-MR16-WF-30K
- LXC3-MR16-NS-22K, LXC3-MR16-NS-27K, or LXC3-MR16-NS-30K
- LXC3-MR16-FL-22K, LXC3-MR16-FL-27K, or LXC3-MR16-FL-30K
- LXC3-MR16-WF-27K or LXC3-MR16-WF-30K
- LXC5-MR16-NS-27K or LXC5-MR16-NS-30K
- LXC5-MR16-FL-27K or LXC5-MR16-FL-30K
- LXC5-MR16-WF-27K or LXC5-MR16-WF-30K

DIMENSIONS

- LXC Series - 2" W x 1.5" H



LXC2-MR16



LXC3-MR16



LXC5-MR16

