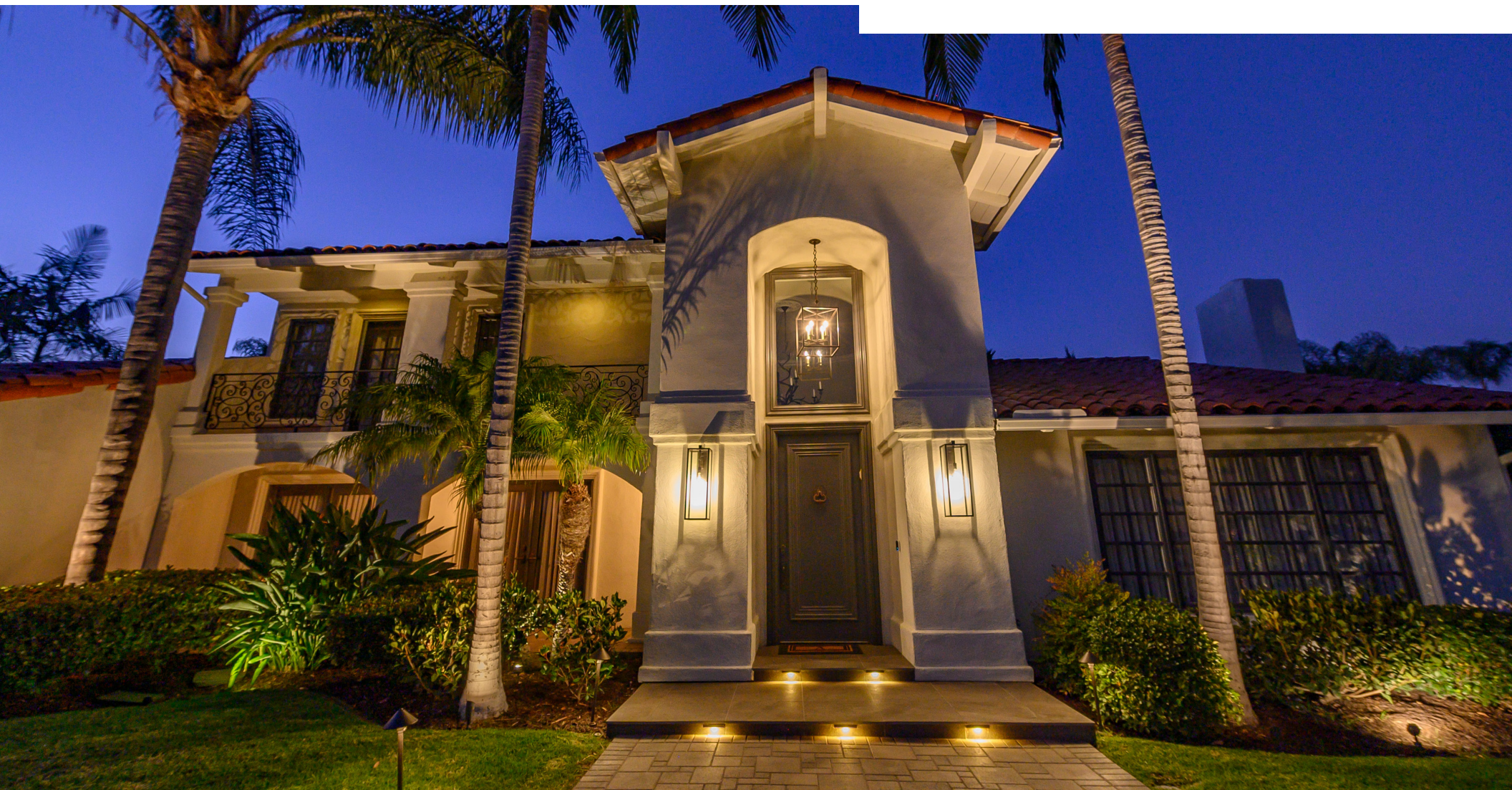


LL

Ledge Lights



Ledge Light

LL4403, LL4407, LL4413

MATERIAL / FEATURES

- Stainless steel
 - Mounting bracket, screws, glare shield
- Cast aluminum - light bar
- Weather resistant powder coat finish - aluminum
 - (BK) Black
 - (BZ) Bronze
 - (GY) Gray
- Mounting bracket includes pre-scored corners for retrofit installations (LL4407) only
- 1 LED - LL4403
- 4 LED's - LL4407
- 8 LED'S - LL4413
- Includes two AC-102 silicone filled wire connectors
- Fixture - 10 year warranty

ELECTRICAL

- Input 9-15 volts
- 10' - #18/2 direct bury landscape lighting wire
- No lamp required
- LED diodes have 90° beam spread
- Low voltage transformer required (not included)
- Includes wire connectors
- C ETL listed and approved
- FCC certified

LED - LIGHTING MODULE

- LED integrated - no lamp required
- LL4403 - 25 Lumens, .4 Watts, VA .60, 366 PF
- LL4407 - 100 Lumens, 1.25 Watts, VA 2, .62 PF
- LL4413 - 200 Lumens, 2.2 Watts, VA 3.3, .85 PF
- Kelvin temperature 2700K

DIMENSIONS

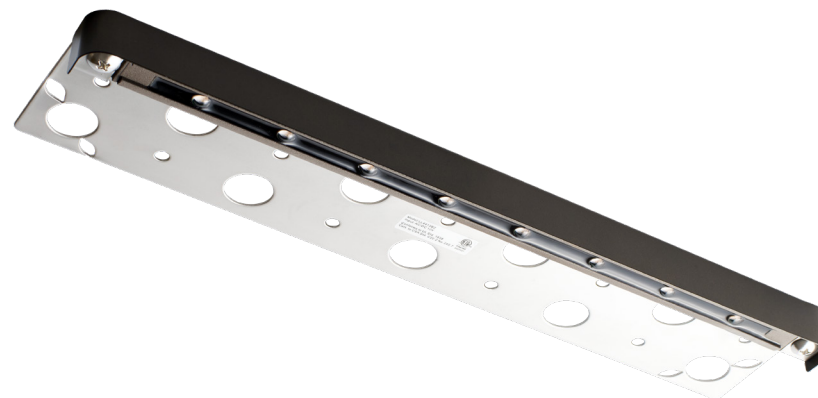
- LL4403 - 3" W x .75" H x 3" D
- LL4407 - 7" W x .75" H x 3" D
- LL4413 - 13" W x .75" H x 3" D



LL4403BZ



LL4407GY



LL4413BZ



Ledge Light

LL6605, LL6707, LL6609BZ

MATERIAL / FEATURES

- Die cast aluminum powder coated bronze fixture
- Weather resistant powder coat finish - aluminum
 - (BK) Black
 - (BZ) Bronze
 - (GY) Gray
- LL6605 - LED magnetic replacement module for LL6707, and LL6609
- LL6707 - 6" aluminum LED replaceable ledge light with surface mount glare shield
 - Includes the LL6605
- LL6609 - 6" aluminum LED replaceable ledge light with under cap mounting bracket and glare shield
 - Includes the LL6605
- The LL6605 LED module can be replaced easily by using a small flat head screwdriver to pry the module out. The LED module is held in place by commercial grade powerful magnets.
- Includes two AC-102 silicone filled wire connectors
- Fixture - 10 year warranty
- LED module - 10 year warranty

ELECTRICAL

- Input 9-15 volts
- 10' - #18/2 direct bury landscape lighting wire
- No lamp required
- LED diodes have 90° beam spread
- Low voltage transformer required (not included)
- Includes wire connectors
- C ETL listed and approved
- FCC certified

LED - LIGHTING MODULE

- LED integrated - no lamp required
- LL6605 - 100 Lumens, .8 Watts, VA 1, .88 PF

DIMENSIONS

- LL6605 - 3.6" W x .6" H x .4" D
- LL6707 - 5.6" W x .9" H x .9" D
- LL6609 - 5.6" W x .9" H x .3" D



LL6605BZ



LL6707BK



LL6609GY