

Ledge Light

LL66 SERIES

MATERIAL / FEATURES

- Die cast aluminum powder coated bronze fixture
- Weather resistant powder coat finish - aluminum
 - (BK) Black
 - (BZ) Bronze
- LL6603 - 3" aluminum LED replaceable ledge light with under cap mounting bracket and glare shield
- LL6609 - 7" aluminum LED replaceable ledge light with under cap mounting bracket and glare shield
- LL6613 - 13" aluminum LED replaceable ledge light with under cap mounting bracket and glare shield
 - Includes the LL6605
- Includes two AC-102 silicone filled wire connectors
- Fixture - 10 year warranty
- LED module - 10 year warranty

ELECTRICAL

- Input 9-15 volts
- 10' - #18/2 direct bury landscape lighting wire
- No lamp required
- LED diodes have 90° beam spread
- Low voltage transformer required (not included)
- Includes wire connectors
- C ETL listed and approved
- FCC certified

LED - LIGHTING MODULE

- LED integrated - no lamp required
- 25 lumens, .4 Watts, VA .60, .36 PF
- 100 lumens, 1.5 Watts, VA 2, .62 PF
- 200 lumens, 2.2 Watts, VA 3.3, .85 PF
- Kelvin temperature 2700K & 3000K

DIMENSIONS

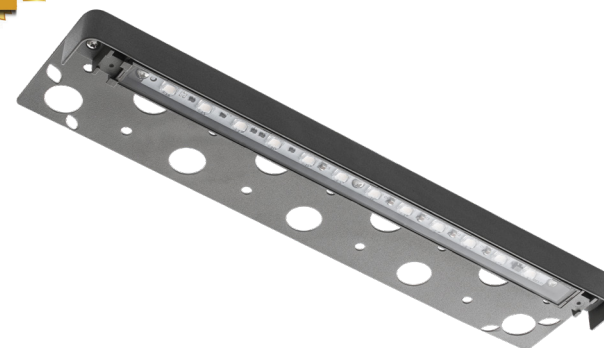
- LL6603 - 3"W x .9"H x 3"D
- LL6605 - 3.6" W x .6" H x .4" D
- LL6609 - 7"W x .9"H x 3"D
- LL6613 - 13"W x .9"H x 3"D



LL6605BZ



LL6609BK



LL6613GY