



# Transformer

## ECO100PC

### MATERIAL / FEATURES

- Commercial grade ABS plastic
- Quick mount bracket
- Includes field replaceable timer module
- Countdown timer function
- 1, 2, 4, 6, 8 hour durations
  - Always OFF
  - Always ON
- Includes low voltage photocell
- Includes secondary side magnetic circuit breaker
- 2 year warranty

### ELECTRICAL

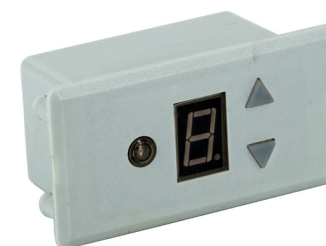
- Low voltage landscape lighting transformer
- 6' - heavy duty power cord
- Terminals for output
- Fully encapsulated EI magnetic core
  - 125° C rated internal wiring
- Wire connectors required (not included)
- Low voltage landscape lighting fixtures required (not included)
- Low voltage landscape lighting lamps required (not included)
- C ETL listed and approved

### MODELS

- ECO100PC - 100 Watts

### DIMENSIONS

- 4"W x 6"H x 3"D



TM-ECO-TM

# Transformer

## ECO120, 200, 300

### MATERIAL / FEATURES

- 304 brushed stainless steel
- Quick mount bracket
- Includes field replaceable timer module
- Countdown timer function
  - 1, 2, 4, 6, 8 hour durations
  - Always OFF
  - Always ON
- Includes low voltage photocell
- Includes secondary side magnetic circuit breaker
- 2 year warranty

### ELECTRICAL

- Low voltage landscape lighting transformer
- 6' - heavy duty power cord
- Fully encapsulated EI magnetic core
  - 125° C rated internal wiring
  - ECO120, 200 - 12V output secondary. Two commo taps, and 12- and 15-volt taps.
  - ECO300SS - 12, 13, 14, 15 terminal range. Two commo taps, and 12,13,14 and 15-volt taps.
- Wire connectors required (not included)
- C ETL listed and approved

### MODELS

- ECO120SS - 120 Watts
- ECO200SS - 200 Watts
- ECO300SS - 300 Watts

### DIMENSIONS

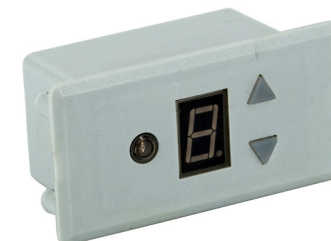
- 5"W x 8"H x 4"D



ECO200SS



ECO300SS



TP-ECO-TM

# Transformer

## MTM SERIES

### MATERIAL / FEATURES

- 304 brushed stainless steel - case and inside panel
- Quick mount bracket
- Sealed removable lockable hinged door
- Pre-scored knockouts sides and bottom panel
- Tool less removable bottom panel
- Timer receptacle
- Photocell ready bypass loop
- Two commons per circuit
- Includes primary thermal protection
- Includes secondary side magnetic circuit breaker
- Oversize terminal blocks
- Lifetime warranty

### ELECTRICAL

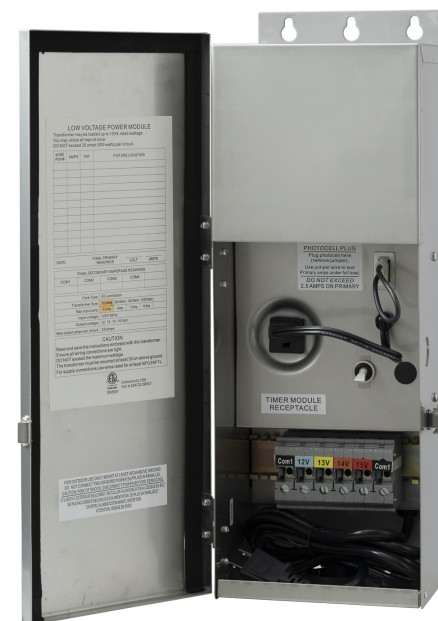
- Low voltage landscape lighting transformer
- 6' - heavy duty power cord
- Includes surge suppressor - prevents initial start overload
- Includes 115 amp terminal block
- Fully encapsulated ei magnetic core
  - Operates whisper quiet
  - Caution - may be very hot - do not touch when its on
  - 125° c rated internal wiring
  - 12-15 volt terminal range
- Wire connectors required (not included)
- Low voltage landscape lighting fixtures required (not included)
- Low voltage landscape lighting lamps required (not included)
- C ETL listed and approved

### MODELS

- MTM150SS - 150 Watts
- MTM200SS - 200 Watts
- MTM300SS - 300 Watts

### DIMENSIONS

- MTM150/200 - 5.75"W x 10.5"H x 4.75"D
- MTM300SS - 6.5" W x 16.5" H x 6" D



MTM300SS



MTM0300SS



# Transformer

## MTP SERIES

### MATERIAL / FEATURES

- 304 brushed stainless steel - case and inside panel
- Quick mount bracket
- Sealed removable lockable hinged door
- Pre-scored knockouts sides and bottom panel
- Tool less removable bottom panel
- Timer receptacle
- Photocell ready bypass loop
- Two commons per circuit
- Includes primary thermal protection
- Includes secondary side magnetic circuit breaker
- Oversize terminal blocks
- Lifetime warranty

### ELECTRICAL

- Low voltage landscape lighting transformer
- 6' - heavy duty power cord
- Includes surge suppressor - prevents initial start overload
- Includes 115 amp terminal block
- Fully encapsulated Toroidal core
  - Operates whisper quiet
  - Cool to the touch
  - 125° C rated internal wiring
  - 12-22 volt taps Wire connectors required (not included)
- Low voltage landscape lighting fixtures required (not included)
- Low voltage landscape lighting lamps required (not included)
- C ETL listed and approved

### MODELS

- MTP600SS - 600 Watts
- MTP900SS - 900 Watts
- MTP1200SS - 1200 Watts

### DIMENSIONS

- MTP600 - 6.5"W x 16.5"H x 6"D
- MTP900,1200 - 8.5"W x 17.5"H x 7"D



MTP300SS



MTP300SS



# Transformer

## ZCT SERIES

### MATERIAL / FEATURES

- Wifi enabled app smart transformer
  - Schedule up to four zones of
    - Independent timing
    - Grouped timing
    - On demand timing
- App enables naming of zones
- Access via home router and smart device app
  - iOS and Android app-based control
  - Daylight savings time option
  - Multiple device control of one transformer
  - Control up to four transformers from one device
- Included 100' range extender wifi antennae
- 304 brushed stainless steel - case and inside panel
- Quick mount bracket
- Sealed removable lockable hinged door
- Pre-scored knockouts on side and bottom panel
- Tool-less removable bottom panel
- Two commons per circuit
- Includes primary thermal protection
- Includes secondary side magnetic circuit breaker
- Oversize terminal blocks
- 5 year warranty

### ELECTRICAL

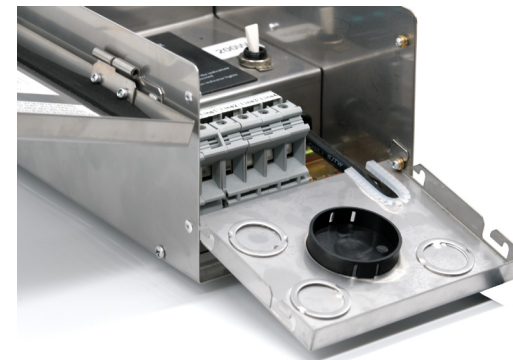
- Low voltage landscape lighting transformer
- 6' Heavy duty power cord
- Includes surge suppressor - prevents initial start overload
- Includes 115 amp terminal block
- Fully encapsulated Toroidal core
  - Operates whisper quiet
  - Cool to the touch
- 125° C rated internal wiring
- 12-volt output
- Wire connectors required (not included)
- Low voltage landscape lighting fixtures required (not included)
- Low voltage landscape lighting lamps required (not included)
- C ETL listed and approved
- Compatible with 2.4Ghz wireless routers only

### MODELS

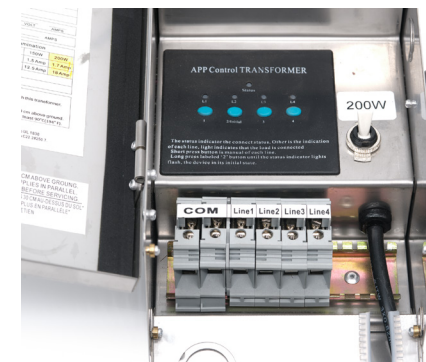
- ZCT150SS - 150 Watts
- ZCT200SS - 200 Watts
- ZCT300SS - 300 Watts

### DIMENSIONS

- 5.75" W x 10.5" H x 4.75" D



TOOL-LESS DROP-DOWN PANEL



**U-Sync Technologies.**

Innovative, Reliable, Proven Smart Wireless Control

# Transformer Accessories

## 12 VOLT DIMMER

### MATERIAL / FEATURES

- Low voltage Dimmer for low voltage transformers
- Aluminum face plate
- Polycarbonate plastic watertight housing
- Includes
  - (4) Stainless steel anchor screws
  - (1) extra fuse stat
  - (4) wire connectors
- Watertight grommet
- Rubber gasket

### ELECTRICAL

- 120-Watt total capacity
- Operating range - 12 VAC
- 10 Amps
- IP 67
- Trim pot adjustment screw

### MODEL

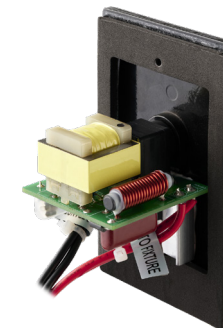
- DM1120-BK

### DIMENSIONS

- 2.75" W X 4.5" H x 3.6" D



DM-1120BK



# Transformer Accessories

## MT1 - MECHANICAL TIMER

- Up to 48 ON/OFF settings
- 24-hour cycle
- Captive pins never get lost
- Cycle repeats daily
- Manual on/off override
- Fits into MTM, MTP and UTR transformers
- 90 day warranty



MT

## DT - DIGITAL TIMER

- 7-day programmable timer
- LCD Screen
- Battery back up
- Fits into MTM, MTP and UTR transformers
- Fixture - 90 day warranty



DT

## PC - 120-VOLT PHOTOCELL

- Plug in photocell
- Use by itself to stay on dusk to dawn
- Use with MT1 or DT to set off time
- Fits into MTM, MTP and UTR transformers
- Fixture - 90 day warranty



PC